

LANCASTER COUNTY

**Food
Hub.**

Neighbor to neighbor.

Walking Together for a Better Future

2024 ANNUAL REPORT



LANCASTER COUNTY
**Food
Hub.**
RECEIVING

A

Strengthening Community *one step at a time.*

In a year of growth and connection, the Lancaster County Food Hub saw neighbors come together to meet rising needs. Despite deeply increased demand, our focus remained steadfast: walking alongside one another with dignity, building relationships, and connecting individuals to the resources they need to thrive.

24% INCREASE IN NEIGHBORS
SERVED YEAR OVER YEAR.



FOOD
55,000 NEIGHBORS
SERVED

CLOTHING
17,500 CLIENTS
SERVED

**UNHOUSED
NEIGHBORS**
800 SERVED

In 2024, the Food Hub walked alongside neighbors to access essential services and resources, supporting **73,000 PEOPLE.**



Small Acts, Big Impact: A Neighbor's Experience

"I've never experienced such absolute kindness. I was able to get clothes and food, and when I asked for tiramisu and they didn't have it, a volunteer ran outside to my car and brought one out for us.

Absolute kindness!"



Enhancing Programs one partnership at a time

Strategic partnerships have been essential in expanding support beyond food, clothing, and homelessness services, creating a seamless continuum of care. Bringing multiple resources together in one place allows neighbors to seek assistance with dignity, ensuring essential needs are met with compassion.



Hosted the **Volunteer Income Tax Assistance (VITA)** with United Way of Lancaster, PA.



Basic healthcare and counseling in partnership with Harm Reduction Project.



Facilitated **SNAP enrollment assistance** in partnership with Central PA Food Bank.



Provided packing site for **13th Back to School Event** with Rep. Strula and Rep. Izzy

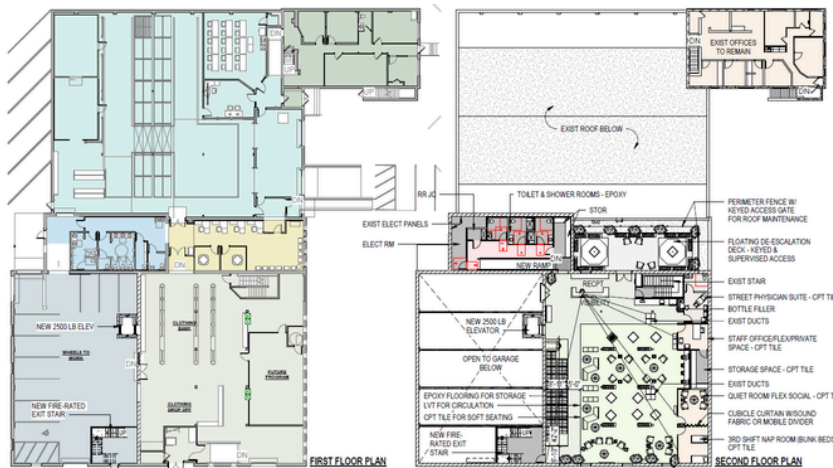


Breaking Barriers. Building Futures.

2024 Capital Campaign

These growing partnerships lay the foundation for the next step—expanding space to more effectively connect neighbors with the supportive services they need. The 2nd floor expansion will create a dedicated area for deeper support, ensuring every individual receives the care and resources they need under one roof.

Proposed Floor Plan



It is in this new space that we **take a giant step toward providing a full complement of wrap around services** that help unsheltered and struggling neighbors breakdown barriers and build toward better futures.



**LEARN
MORE!**

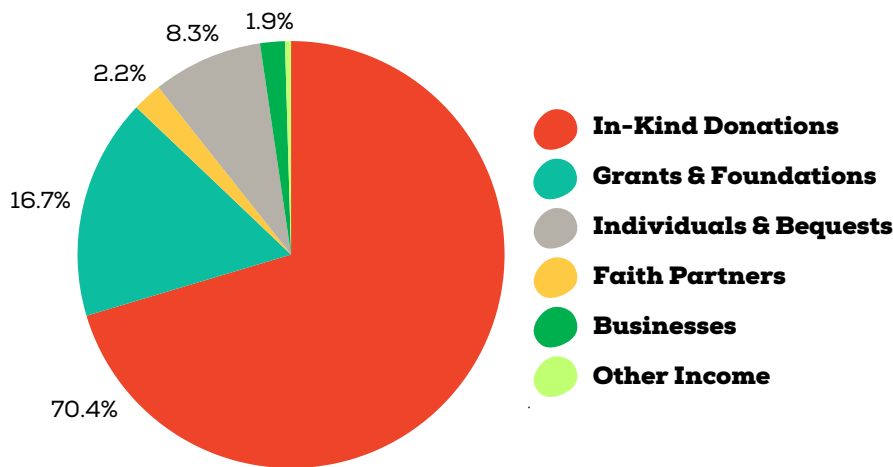


Scan me

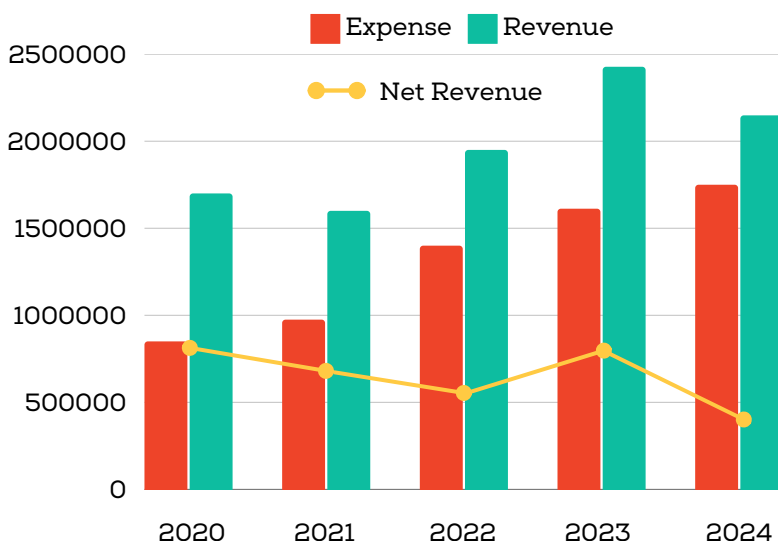
Building a Foundation

Over the past four years, poverty in Lancaster County has grown with demand for services surging 65% beyond traditional levels. Inflation has hit hard – some food staples cost 70% more than last year, and \$1 now provides just four meals instead of six. Clothing essentials like coats and socks have risen 40% in cost, and our homelessness services are now entirely self-funded to remain flexible and responsive. With funding highs in 2020 and 2023 behind us, we’re working diligently to maximize every dollar. It is solely through your generosity that we can respond to community needs in these times with boldness, courage, and perseverance. *What a privilege!*

Revenue Sources

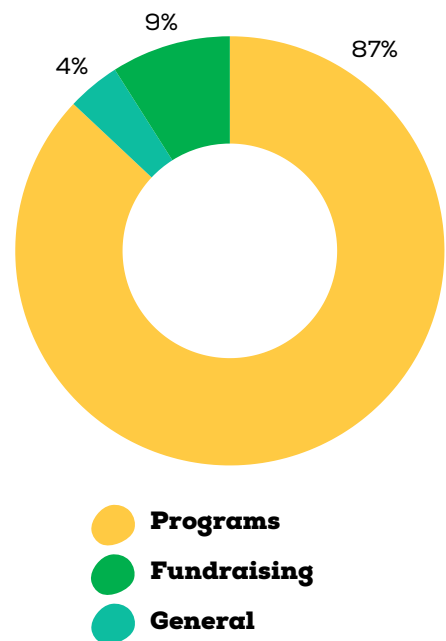


Financial Performance



* Audited financials can be found on our website.

Functional Expenses



The Food Hub carefully stewards the donations we receive from generous supporters.

one investment at a time.♥

Every donation—whether monetary, food, or clothing—plays a vital role in strengthening the foundation of support for Lancaster neighbors in need. Through the support of annual partners, community grants, and faith-based contributions, the Food Hub continues to expand its impact, offering dignity, hope, and stability to those who need it most. Every investment, no matter the size, creates lasting change – *one act of kindness at a time.*

Thank you to all of the generous donors who supported the Food Hub in 2024!



Donors contributing \$50,000 or more are prominently recognized for their extraordinary generosity and impact in supporting the Food Hub's mission.



Neighbors Lifting Neighbors

"We're thrilled at the AWI Foundation to contribute to the Lancaster County Food Hub. Our team is passionate about supporting initiatives that impact our community. This gift shows our dedication to sustainability and ensuring everyone has access to basic needs. We truly believe in the power of working together and are excited for the positive changes this contribution will bring." -**Salena Coachman, Armstrong World Industries Foundation**





ExtraGive Food Truck Rally



Hearts (& Stomachs!) EXTRA FULL!

The “Pay What You Can” Food Truck Event embodies the heart of the Food Hub’s mission—bringing the entire community together, regardless of means, to share a meal in a welcoming space. More than just great food, it was an afternoon of connection, generosity, and support. With 379 meals served to neighbors, volunteers, partners, and sponsors, the event proved that food has the power to unite us all. **Together, we raised \$135,734 through ExtraGive efforts**, far surpassing our \$105,000 goal!

Moments of Celebration one connection at a time. ♥

Community events bring neighbors together, turning awareness into action. By opening the Food Hub's doors, visitors witness the impact of services firsthand. These gatherings foster connection and inspire involvement. We are grateful to partner with organizations to expand our reach and engage even more of the community in this work.



Spread Love at the Food Hub hosted for Lancaster Young Professionals



Lancaster Chamber Mixer



Food Hub Annual Breakfast



Leadership Lancaster
Poverty Simulation

Neighbors Behind the Mission

one person at a time.

The success of the Food Hub is powered by the dedication of staff, board members, and volunteers—neighbors who give their time, expertise, and passion to the mission. Together, these neighbors are the backbone of the Food Hub’s work, walking alongside those in need and making the mission possible.



Volunteers are a key extension of the Food Hub Family. In 2024, over **100 volunteers** dedicated more than **15,000 hours** of service!




Empowered by Compassion: Serving with Purpose

"I give to the Food Hub because it is a terrific place for my faith community to serve our neighbors. We know that our work and generosity is making a difference among the most vulnerable people dealing with our nation's most critical issues: food and shelter. The LCFH values the dignity of its clients, so helping really helps. When we serve, it's just people helping people—neighbors helping neighbors." - **Pastor Dan, Board Member & First Presbyterian Church of Lancaster**





Connect with the Food Hub

 (717) 291-2261

 www.lancasterfoodhub.org

 812 North Queen Street,
Lancaster, PA 17603